

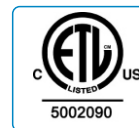
## 4FT 10W High Lumens 155lm/w LED Tube

### ANKSO high quality LED tube ETL certified T8 Series

This tube is ETL certified tube. They are ideal replacements for standard high wattage and inefficient fluorescent tubes. It use the highest quality components available to deliver a long-lasting and environmentally friendly LED light source.

### Features, Benefits, Performance

- High brightness , use EPISTAR 2835 LED chip
- High CRI>80RA
- 50% reduction in energy consumption
- 50,000hrs lifespan, 5 years warranty
- Vibration and impact resistant
- No mercury allowing for non-hazardous waste materials
- Instant illumination, no flicker, no buzz
- No UV emission

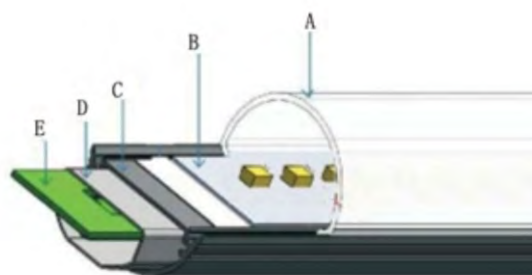


### Parameters

Model	Watts	Length	Lumen	Voltage	CCT	CRI	THD	PF	Certificate
AHKT8/10/4FTH	10W	4FT 1200mm	155lm/w	100~277VAC	3000~6500K	>80	<=20%	0.95	ETL cETL

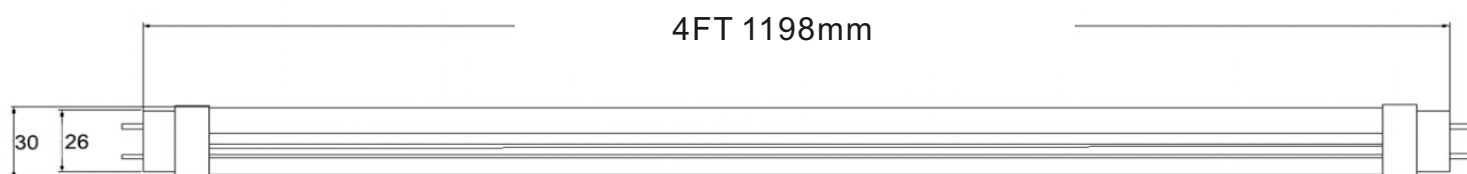
Structure and Dimensions

1. Internal Structure:

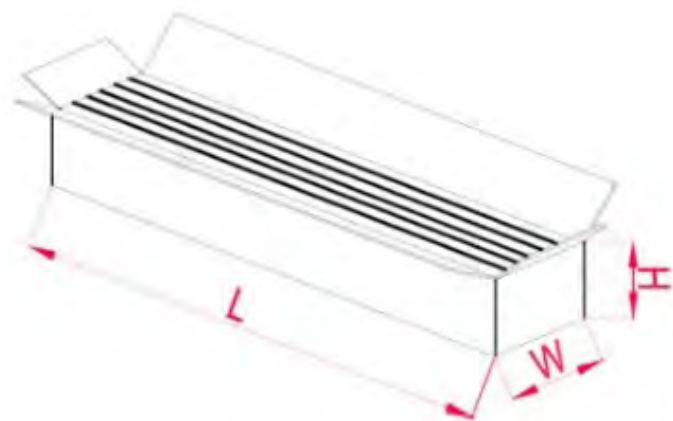


- A. PC cover
- B. LED PCB
- C. D sharp aluminum housing
- D. LED driver PC cover
- E. Built-in led driver

2. Dimensions



Packing



Model	Q'ty/CTN	Dimensions (cm)	Gross Weight (KG)
AHKT8/10/4FTH	30pcs	130*25*25	11